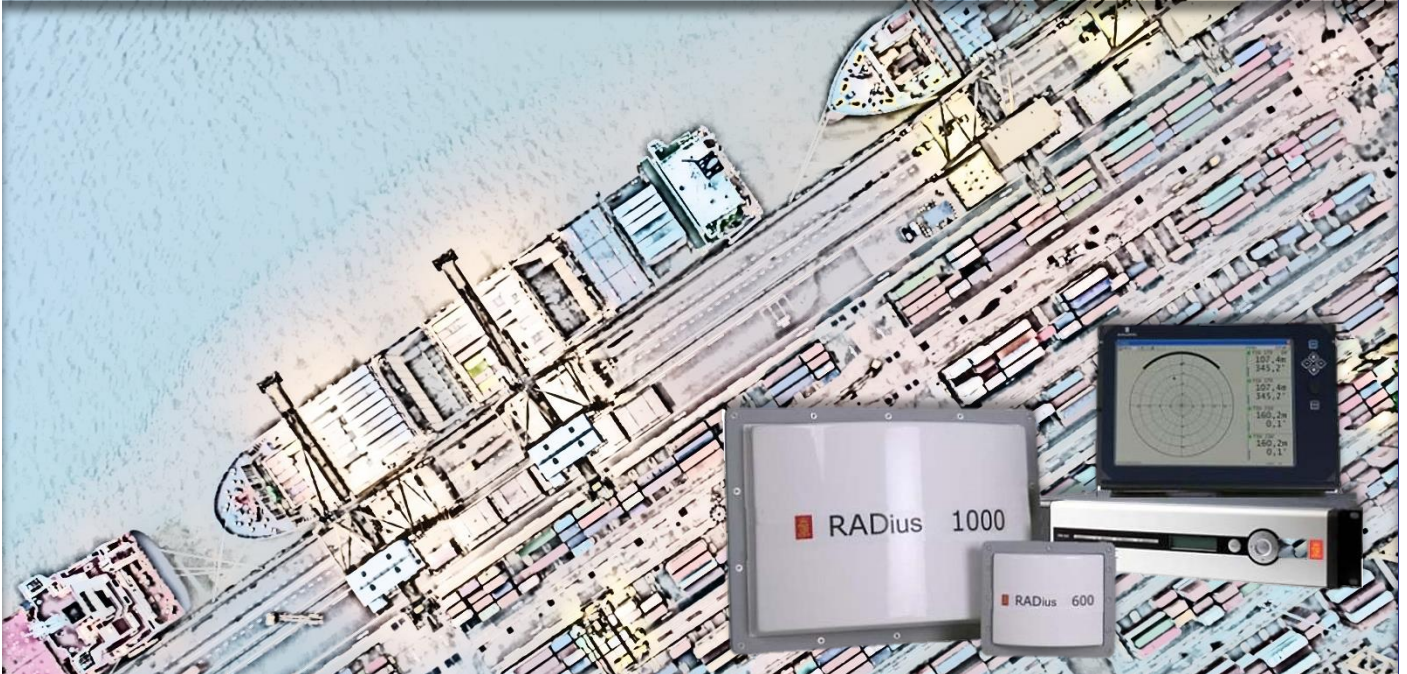


Do not cause interference in the 5.51-5.61 GHz Band !



Relative Position Reference Systems using the 5.51-5.61 GHz band
cause interference to inland weather radars (on 5.605 MHz).

To avoid causing interference, please make sure that :

- ✓ This device is disconnected from the antenna when entering Belgian territorial waters.
- ✓ This device stays deactivated when mooring in a Belgian port.

It may only be reactivated once your vessel has left Belgian territorial waters.

Be aware that seizure of the device(s) could occur if these instructions are not properly followed.

Better to be safe than sorry !

For any questions, feel free to contact us.