

**DOCUMENT OF COMPLIANCE**  
Special Requirements for Ships carrying Dangerous Goods

Issued in pursuance of the requirement of regulation II-2/19.4  
of the International Convention for Safety of Life at Sea, 1974,  
as amended, under the authority of  
the Government of Finland

Name of ship	Signal letters	Port of Registry	IMO Number	Ship type
				roro cargo ship

Cargo space (type of cargo space)	Provisions of regulation SOLAS II-2/19 which are complied with	Classes of dangerous goods (in packaged form) (see note (1) )
Ship	2.1, 3.1.1, 3.6.1 and 3.6.2	(see below)
S4 Top deck (weather deck)	3.1.2, 3.7 and 3.8 (see note (2))	1, 2, 3, 4, 5.1, 5.2, 6.1, 8 and 9 - see note (4)
S3 Upper deck (closed roro cargo space)	3.1.2, 3.1.3, 3.2, 3.3, 3.4.1, 3.4.2, 3.5, 3.7, 3.8, 3.9 and 3.10 (see note (2))	1, 2, 3, 4, 5.1, 6.1, 8 and 9 - see note (4) and (5)
S2 Main deck (closed roro cargo space)	3.1.2, 3.2, 3.3, 3.4.1, 3.4.2, 3.5, 3.7, 3.8 and 3.10 (see note (3))	1.4S, 2, 3, 4, 5.1, 6.1, 8 and 9
S1 Tank top (closed roro cargo space)	3.2, 3.4.1, 3.4.2 and 3.10	9

## NOTE

(1) Carriage of dangerous goods of classes 6.2, and 7 is acceptable in the ship by following the IMDG Code rules.

(2) Where the fire insulation of the bulkheads between the machinery spaces of category A and the Top deck (weather deck) and Upper deck cargo spaces are not A-60 (paragraph 3.8 of SOLAS II-2/19, dangerous goods shall be stowed at least 3 m away from such machinery space boundaries. The restricted areas shall be marked on board the ship

(3) The fire insulation of the decks between the machinery spaces of category A and the main cargo deck is A-60 (paragraph 3.8 of SOLAS II-2/19). Accordingly, dangerous goods may be stowed by such machinery space boundaries.

(4) Dangerous goods of class 1 shall not be stowed within a horizontal distance of 6 m from any fire, machinery exhausts, galley uptakes, lockers used for combustible stores or other potential sources of ignition and not less than a horizontal distance of 8 m from the bridge, living quarters and lifesaving appliances. The restricted area shall be marked on board the ship.

(5) Dangerous goods of class 3 with a flashpoint below 23°C (closed cup test), all classes 6.1 liquids and class 8 liquids with a flashpoint below 23°C not to be carried on Upper deck at the same time as dangerous goods of classes 1.1 – 1.6.

(6) Stowage of class 2.3 having subsidiary risk class 2.1 is prohibited.

(7) Stowage of class 4.3 liquids having a flashpoint less than 23°C is prohibited.

**NOTE:** There are no special requirements in the 1974 SOLAS regulation II-2/19 for the carriage of dangerous goods of classes 6.2 and 7, and for the carriage of dangerous goods in limited quantities, as required in chapter 3.4 of the IMDG Code, and excepted quantities, as required in chapter 3.5 of the IMDG Code.

**THIS IS TO CERTIFY:**

1 that the construction and equipment of the above mentioned ship was found to comply with the provisions of

(a) regulation II-2/19 of the International Convention for the Safety of Life at Sea, 1974, as amended, for the carriage of those classes of dangerous goods as specified in the appendix 1 hereto; and

(b) Resolution on the carriage of Dangerous Goods on Board Ro/Ro Ships in Restricted Traffic in the Baltic, given by the Finnish Maritime Administration on 1st October 1980 (as amended, see the FMA Bulletin No. 5/14.12.2009), for the carriage of those classes of dangerous goods as specified in the appendix 2 hereto.

2 that the ship is suitable for the carriage of those classes of dangerous goods as specified in the appendixes hereto, subject to any provisions in

(a) the International Maritime Dangerous Goods (IMDG) Code;

(b) ~~the Code of Safe Practice for Solid Bulk Cargoes (BC) Code;~~

(c) ~~the International Maritime Solid Bulk Cargoes (IMSBC) Code;~~

(d) Resolution on the carriage of Dangerous Goods on Board Ro/Ro Ships in Restricted Traffic in the Baltic, given by the Finnish Maritime Administration on 1<sup>st</sup> October 1980 (as amended, see the FMA Bulletin No. 5/14.12.2009); and

(e) the law on transport of dangerous goods (719/1994) and the related regulations (Decree 666/1998, the decisions of this Administration)

for individual substances, materials or articles also being complied with.

Completion date of the survey on which this certificate is based:

Last date of validity

Issued at

FI 4/350/2011

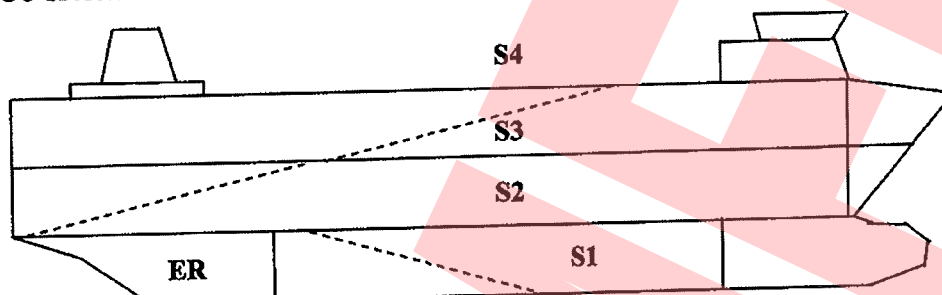
Fee 208 + 4 x 104 = 624,00 EUR (decree 1185/2010)

**NOTE:** There are no special requirements in the 1974 SOLAS regulation II-2/19 for the carriage of dangerous goods of classes 6.2 and 7, and for the carriage of dangerous goods in limited quantities, as required in chapter 3.4 of the IMDG Code, and excepted quantities, as required in chapter 3.5 of the IMDG Code.

## APPENDIX 1

SPACES INDICATED IN THE PLANS WITH NUMBERS  
CORRESPONDING WITH THE TABLE BELOW

## CARGO SPACES



Cargo space/Hold Class	S1 Tank top (closed ro-ro cargo space)	S2 Main deck (closed ro-ro cargo space)	S3 Upper deck (closed ro-ro cargo space)	S4 Top deck (weather deck)
1.1 - 1.6	X	X	P	P
1.4S	X	P	P	P
2.1	X	P	P	P
2.2	X	P	P	P
2.3 flammable	X	P (Note (6))	P (Note (6))	P
2.3 non-flammable	X	P	P	P
3 FP < 23°C c.c.	X	P	P (Note (5))	P
3 23°C ≤ FP ≤ 60°C c.c.	X	P	P	P
4.1	X	P	P	P
4.2	X	P	P	P
4.3 liquids	X	P (Note (7))	P (Note (7))	P
4.3 solid	X	P	P	P
5.1	X	P	P	P
5.2	X	X	X	P
6.1 liquids FP < 23°C c.c.	X	P	P (Note (5))	P
6.1 liquids 23°C ≤ FP ≤ 60°C c.c.	X	P	P (Note (5))	P
6.1 liquids	X	P	P (Note (5))	P
6.1 solids	X	P	P	P
8 liquids FP < 23°C c.c.	X	P	P (Note (5))	P
8 liquids 23°C ≤ FP ≤ 60°C c.c.	X	P	P	P
8 liquids	X	P	P	P
8 solids	X	P	P	P
9	P	P	P	P

For remarks see page 1.

P Indicates PACKAGED GOODS PERMITTED  
A Indicates PACKAGED AND BULK GOODS ALLOWED

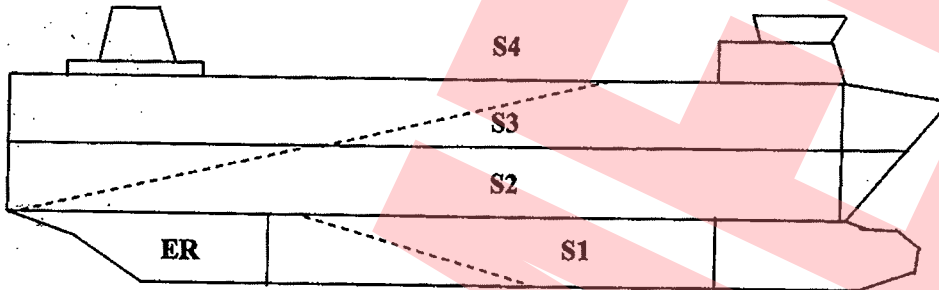
X NOT ALLOWED  
FP = flash point

NOTE: There are no special requirements in the 1974 SOLAS regulation II-2/19 for the carriage of dangerous goods of classes 6.2 and 7, and for the carriage of dangerous goods in limited quantities, as required in chapter 3.4 of the IMDG Code, and excepted quantities, as required in chapter 3.5 of the IMDG Code.

**APPENDIX 2**

**SPACES INDICATED IN THE PLANS WITH NUMBERS CORRESPONDING WITH THE TABLE BELOW**

**CARGO SPACES**



Cargo space/Hold	S1 Tank top (closed roro cargo space)	S2 Main deck (closed roro cargo space)	S3 Upper deck (closed roro cargo space)	S4 Top deck (weather deck)
1.1 - 1.6	X	X	X	P
1.4S	X	P	P	P
2.1	X	X	X	P
2.2	X	P <sup>3</sup>	P <sup>3</sup>	P
2.3	X	X	X	P
3 PG I and II	X	P	P	P
3 PG III	X	P	P	P
4.1 <sup>2</sup> UN No. 1944, 1945, 2254 & 2623	X	P	P	P
4.1 <sup>2</sup> other UN No.	X	X	X	P
4.2	X	X	X	P
4.3	X	X	X	P <sup>1</sup>
5.1	X	P	P	P
5.2 <sup>2</sup>	X	X	X	P
6.1 PG I and II	X	X	X	P
6.1 PG III	X	P	P	P
6.2	X	P	P	P
7	X	P	P	P
8 PG I and II	X	X	X	P
8 liquids PG III	X	P	P	P
8 solids PG III	X	P	P	P
9	P	P	P	P

**P** Indicates PACKAGED GOODS PERMITTED  
**A** Indicates PACKAGED AND BULK GOODS ALLOWED  
**X** NOT ALLOWED  
**PG** = packing group

**Notes pertaining to this table:**

**A:** If the stowage of dangerous goods is prohibited according to this table for one item contained in a CTU loaded with mixed dangerous goods, this prohibition applies to the whole unit within that compartment.

**B:** Substances assigned to special provision SP 900 of the IMDG Code are prohibited.

**C:** If the stowage of dangerous goods is prohibited according to this table, but is permitted under the provisions of the IMDG Code, the stowage requirements of the IMDG Code may be applied instead.

**Remarks related to the information in the table above:**

<sup>1</sup> The carriage of Aluminium ferrosilicon powder of UN number 1395, Aluminium silicon powder, uncoated of UN number 1398, Calcium silicide of UN number 1405 and Ferrosilicon of UN number 1408 when transported in bulk packagings, in containers, road vehicles or rail wagons, tank containers or demountable tanks is allowed only when accompanied by a certificate stating that the material was stored under cover, but in the open air, and that the particle size is representative of the material stored.

<sup>2</sup> For the stowage of these substances, chapter 7.7 of the IMDG Code shall be complied with in addition to the provisions of ADR.

<sup>3</sup> Refrigerated gases of ADR or of stowage category "D" of the IMDG Code are prohibited.

**NOTE:** There are no special requirements in the 1974 SOLAS regulation II-2/19 for the carriage of dangerous goods of classes 6.2 and 7, and for the carriage of dangerous goods in limited quantities, as required in chapter 3.4 of the IMDG Code, and excepted quantities, as required in chapter 3.5 of the IMDG Code.