

<p style="text-align: center;"><b>INTERIM ACCIDENT REPORT</b></p>	<p style="text-align: center;"><b><i>FIRE ON BOARD MV LOWLANDS MIMOSA- 23/06/2022- PORT OF GHENT</i></b></p>	<p style="text-align: center;">Date</p>
<p style="text-align: center;">2023/1</p>		<p style="text-align: center;">19/06/2023</p>

## MARINE CASUALTY INFORMATION

### RESUME

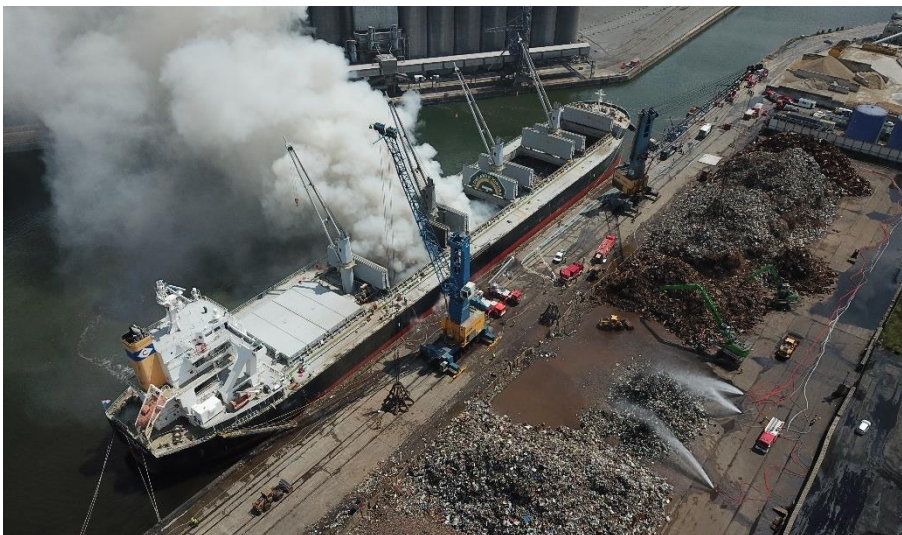
*Throughout this report all times are in Central European Summer Time which is UTC+2, unless specified.*

On June 23<sup>rd</sup>, 2022, around 22:45 hours, a fire broke out on board in the cargo holds of the Panamese bulk carrier LOWLANDS MIMOSA during the loading of a cargo of scrap metal when the vessel was alongside in the port of Ghent.

The cargo contained flammable impurities such as lithium batteries, plastic, wood, rubber, foam, turnings, etc.

The fire started in cargo hold N° 4 and spread over three additional cargo holds. After 36 hours of fire-fighting, with assistance of the fire brigade of the city of Ghent, three cargo holds were filled with water to extinguish the fire.

The fire resulted in structural damage to the vessel. Five persons suffered minor injuries during the fire fighting activities.



*Figure 1 - Fire on board mv LOWLANDS MIMOSA*

## CLASSIFICATION OF THE ACCIDENT

According to Resolution A.849(20) of the IMO Assembly of 27 November 1997, Code for the investigation of Marine Casualties and Incidents, a *serious marine casualty* means a marine casualty involving a fire, explosion, grounding, contact, heavy weather damage, ice damage, hull cracking suspected hull defect, etc., resulting in:

- structural damage rendering the ship unseaworthy, such as penetration of the hull underwater, immobilization of main engines, extensive accommodation damage etc.;
- or pollution (regardless of quantity);
- and/or a breakdown necessitating towage or shore assistance.

*Less serious accidents* are accidents that are not defined as *serious accidents* or *very serious accidents*.

According this definition, the accident was classified as a

### **SERIOUS MARINE CASUALTY**

## ACCIDENT DETAILS

Time and date	June 23 <sup>rd</sup> , 2022 – 22:45 hours LT(UTC+2)
Location	Berth 950, Port of Ghent, Belgium
Crew	21
Injured Persons- not crew	5
Deceased persons	0

## VESSEL'S PARTICULARS



Figure 2 – Mv LOWLANDS MIMOSA

Picture: Vesseljoin.com

Type	Bulk Carrier
Flag	Panama
Port of registry	Panama
Call Sign	HPTF
IMO N°	9802255
Year Keel Laid	2015
Manager	FUKUJIN KISEN CO., LTD.
LOA	199,90 m
Breadth	32,26 m
Depth, moulded	18,60 m
Deadweight	35020,6 mT - Summer
Draught Max.	13,325 m- Summer
Gross tonnage	35596
N° of Main Engines	1
Installed engine power	7360 kW – 99 rpm
Type of engine	MITSUI M.A.N. B&W/6S50ME
N° of Propellers	1
Service speed	14,39 kts laden
Grain Capacity	79,014.70 m

The independent investigation into the cause of this accident was conducted by FEBIMA, the **Federal Bureau for the Investigation of Maritime Accidents**:

[www.febima.be](http://www.febima.be)



**Federal Bureau for the Investigation  
of Maritime Accidents**